

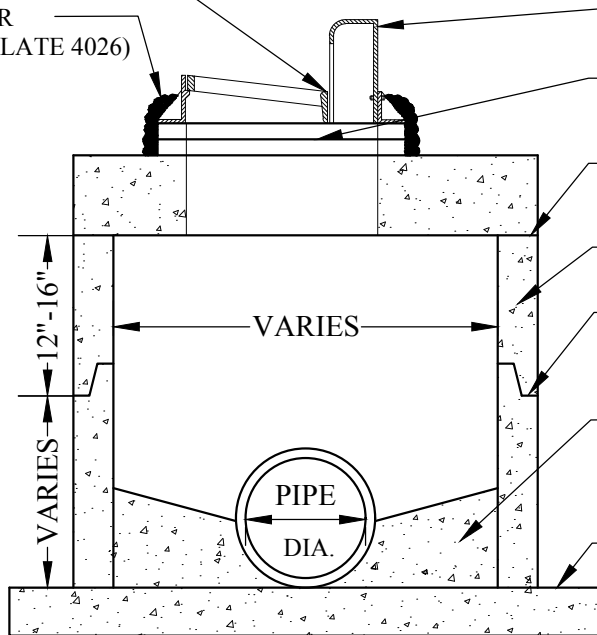
TOP SLAB - SEE MNDOT STD. PLATE 4022A  
2' x 3' SLAB OPENING

DIMENSION FROM BACK OF CURB TO  
CENTER OF PIPE  
48" DIA. MH = 9" IN FRONT OF BACK OF CURB  
60" DIA. MH = 3" IN FRONT OF BACK OF CURB  
72" DIA. MH = 3" BEHIND BACK OF CURB  
84" DIA. MH = 9" BEHIND BACK OF CURB  
96" DIA. MH = 15" BEHIND BACK OF CURB

**PLAN**

FLOW LINE WILL BE 0.7'  
BELOW TOP OF CURB

CONCRETE COLLAR  
(SEE MNDOT STD. PLATE 4026)



NEENAH R-3067-V CASTING  
OR APPROVED EQUAL

ADJUSTING RINGS (MIN. 1, MAX. 3)  
ENCASE WITH CONCRETE COLLAR

PRECAST REINFORCED CONCRETE SLAB  
SEALED WITH SINGLE ROPE OF MASTIC

PRECAST CONCRETE SECTION

ALL JOINTS IN MANHOLE TO HAVE  
"O" RING RUBBER GASKET JOINTS  
PER ASTM C443

DOGHOUSES WILL BE GROUTED ON  
BOTH THE OUTSIDE AND AND INSIDE  
GROUT BOTTOM TO 1/2 DIA. OF PIPE

BASE SLAB - SEE MNDOT STD. PLATE 4011E

**SECTION**



CITY OF BURNSVILLE - ENGINEERING DEPT.

**CATCH BASIN MANHOLE**

Plate No.

STM - 2

Revision Date

02/2021

File Location:

S:\Details\english\Storm Sewer\STM02-CATCH BASIN MH.dwg