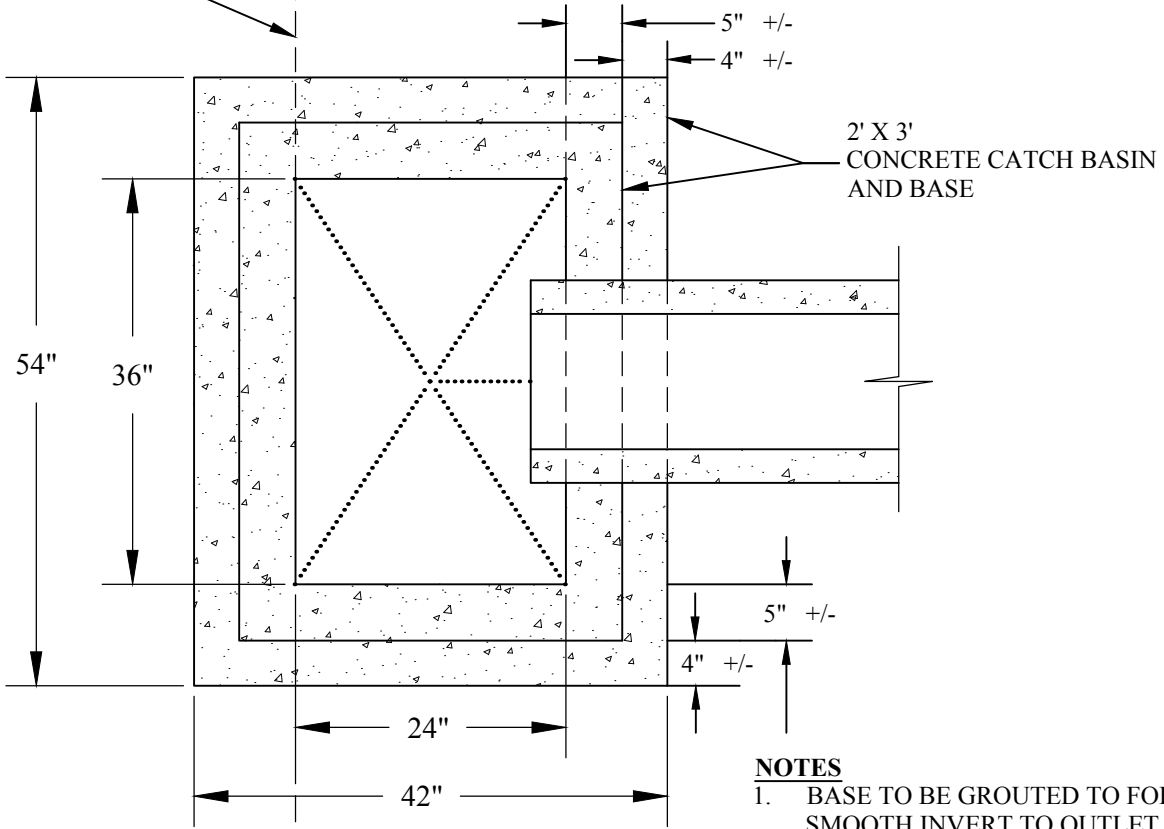


BACK OF CURB



2' X 3'
CONCRETE CATCH BASIN
AND BASE

54"

36"

24"

42"

5" +/-

4" +/-

5" +/-

4" +/-

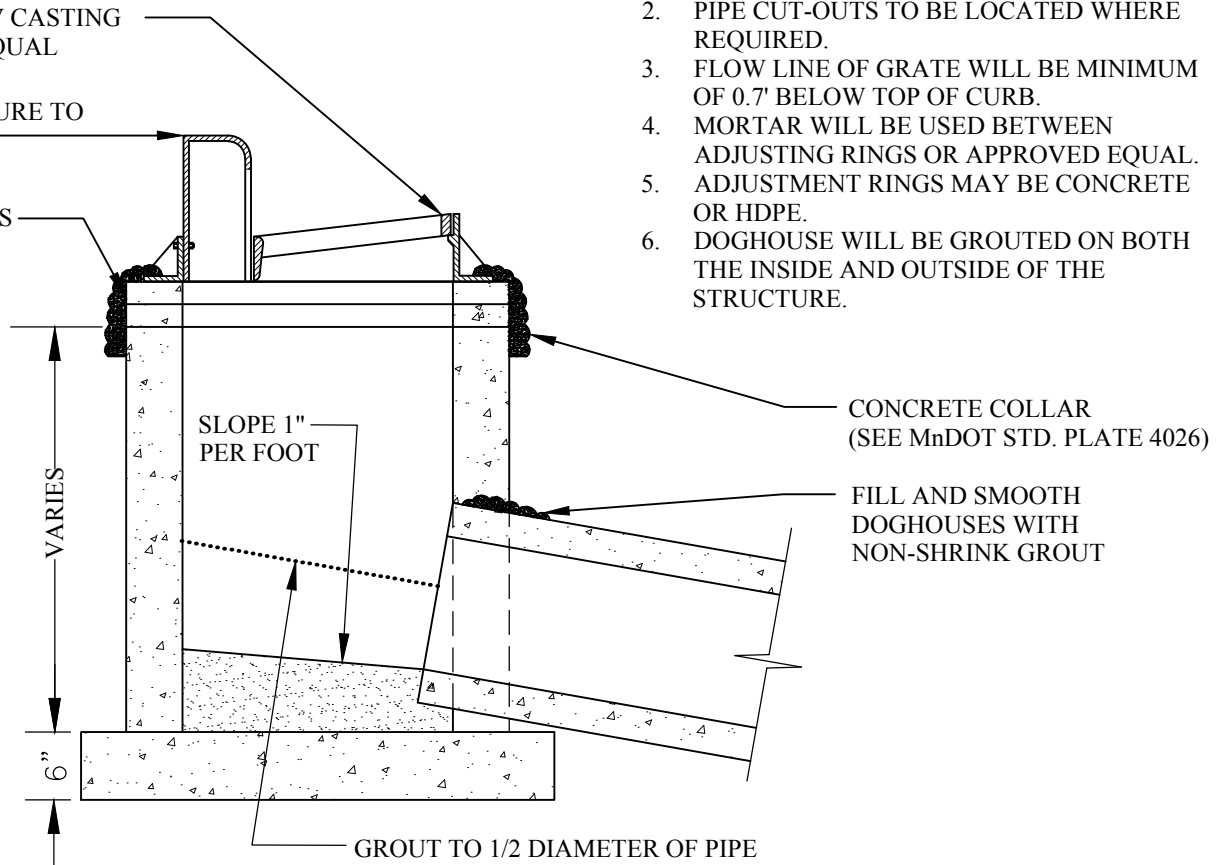
NOTES

1. BASE TO BE GROUTED TO FORM A SMOOTH INVERT TO OUTLET
2. PIPE CUT-OUTS TO BE LOCATED WHERE REQUIRED.
3. FLOW LINE OF GRATE WILL BE MINIMUM OF 0.7' BELOW TOP OF CURB.
4. MORTAR WILL BE USED BETWEEN ADJUSTING RINGS OR APPROVED EQUAL.
5. ADJUSTMENT RINGS MAY BE CONCRETE OR HDPE.
6. DOGHOUSE WILL BE GROUTED ON BOTH THE INSIDE AND OUTSIDE OF THE STRUCTURE.

NEENAH R-3067-V CASTING
OR APPROVED EQUAL

CENTER STRUCTURE TO
BACK OF CURB

ADJUSTING RINGS
MIN. 1, MAX. 3



CONCRETE COLLAR
(SEE MnDOT STD. PLATE 4026)

FILL AND SMOOTH
DOGHOUSES WITH
NON-SHRINK GROUT

SLOPE 1"
PER FOOT

VARIES

6"

GROUT TO 1/2 DIAMETER OF PIPE



CITY OF BURNSVILLE - ENGINEERING DEPT.

STANDARD CATCH BASIN

Plate No.

STM-1

Revision Date

02/2021

File Location:

S:\Details/english\Storm\STM01-Std CB.dwg