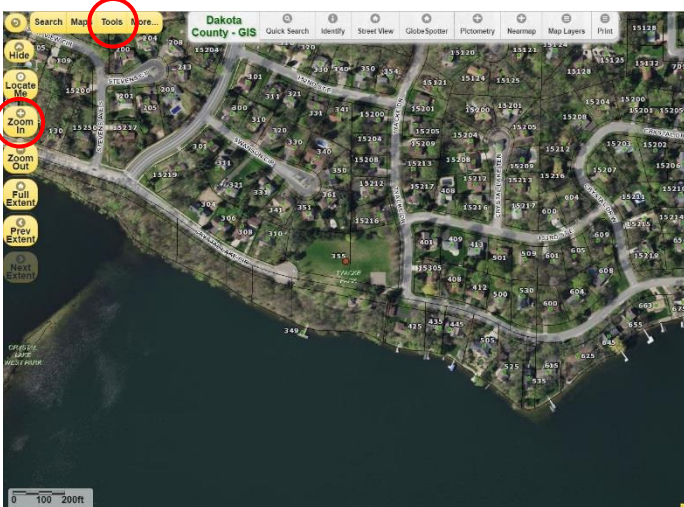
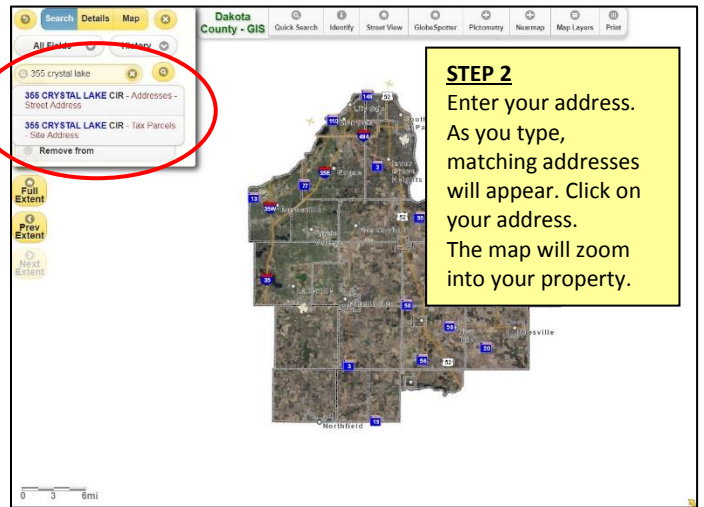
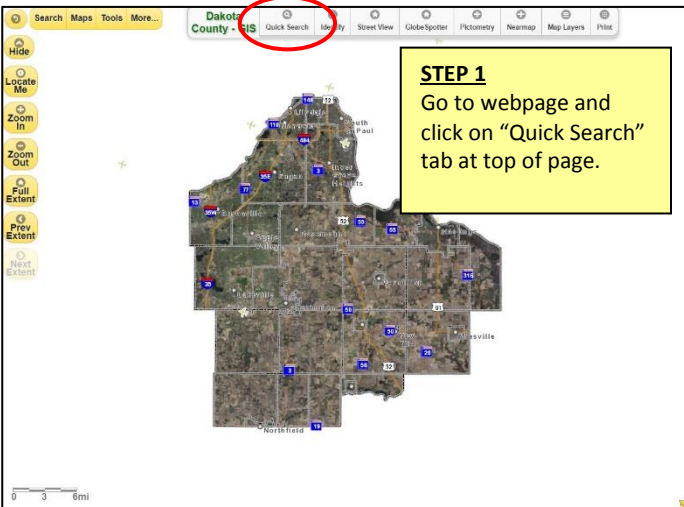
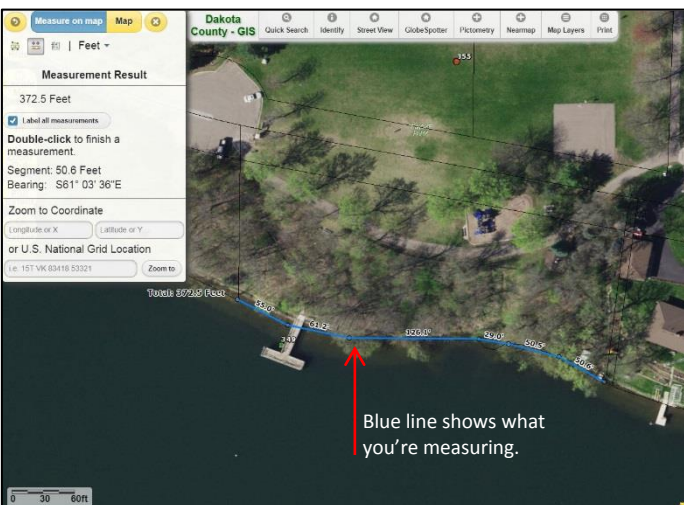


How to find the length of your property shoreline using Dakota County's online GIS map tool: <http://gis.co.dakota.mn.us/dcgis>



STEP 3
Click on [Zoom In icon] to close the box that popped up when you clicked on the "Quick Search" tab. Now you can see the "Zoom In" tool. Click it to zoom in more. Next, click the "Tools" button. A dropdown box will appear - click on "Measure."



STEP 4
Use the ruler tool (may be already selected as a default) to measure your shoreline in feet (default). Click at one end of the property line (black) on the lake side of your property. Measure the black property line along the lake not the photo image of your shoreline.

If your property line along the lake isn't straight, click to end a segment and begin another (the length of each segment will appear). Double-click to stop measuring. The total length will be displayed near the blue measurement line and within the measurement window.

