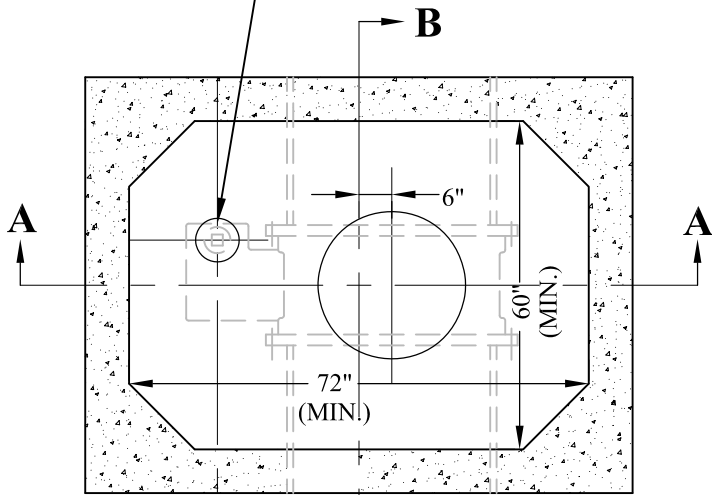


GATE VALVE ACCESS HOLE TO BE CORE DRILLED IN THE FIELD AFTER VALVE INSTALLATION (INCIDENTAL)



NOTES

1. EXTERNAL MANHOLE DIMENSIONS VARY BASED ON PRECAST REQUIREMENTS.
2. SEE PLANS FOR PIPE SIZE AND STRUCTURE ELEVATIONS.
3. ADJUSTING RING, MIN. 2, MAX 4. SEE MnDOT STD. PLATE 4026

NEENAH CASTING R-1642-B WITH THE WORD "WATER" STAMPED ON THE COVER, OR APPROVED EQUAL.

PRECAST CONCRETE TOP SLAB WILL BE DESIGNED FOR AASHTO HS-25 LOADING PLUS DEAD LOAD

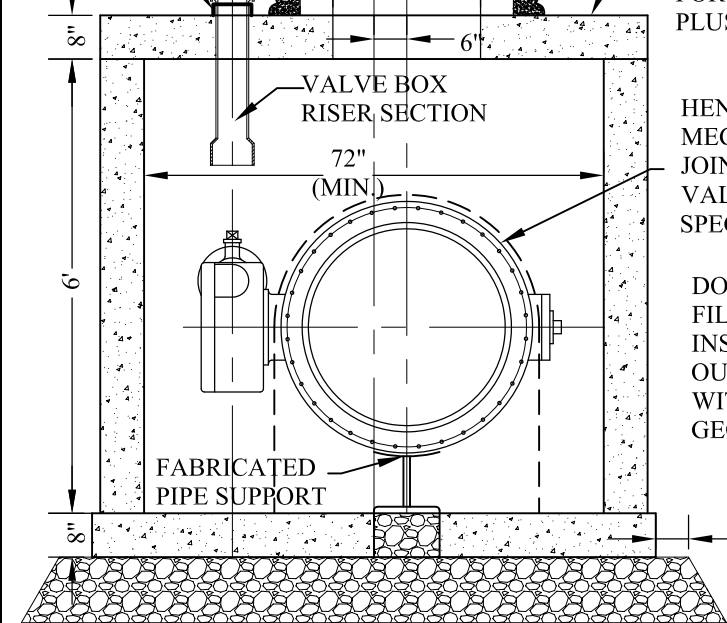
HENRY PRATT MECHANICAL JOINT BUTTERFLY VALVE (AS SPECIFIED)

DOGHOUSE TO BE FILLED WITH FOAM INSULATION & OUTSIDE WRAPPED WITH TYPE V GEOTEXTILE FABRIC

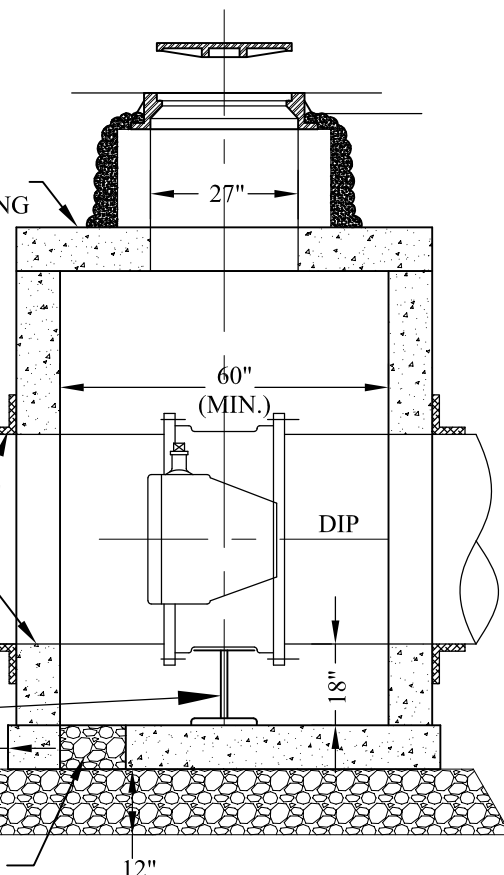
FABRICATED PIPE SUPPORT

12" ROCK SUMP

VALVE BOX TOP SECTION
MEGALUG



SECTION A-A



SECTION B-B



CITY OF BURNSVILLE - ENGINEERING DEPT.
**PRECAST BUTTERFLY
VALVE MANHOLE**

Plate No.	WM-7
Revision Date	02/2021
File Location:	S:\Details\english\Watermain\WM07-Butterfly_Valve_MH.dwg